

SCHEDULES

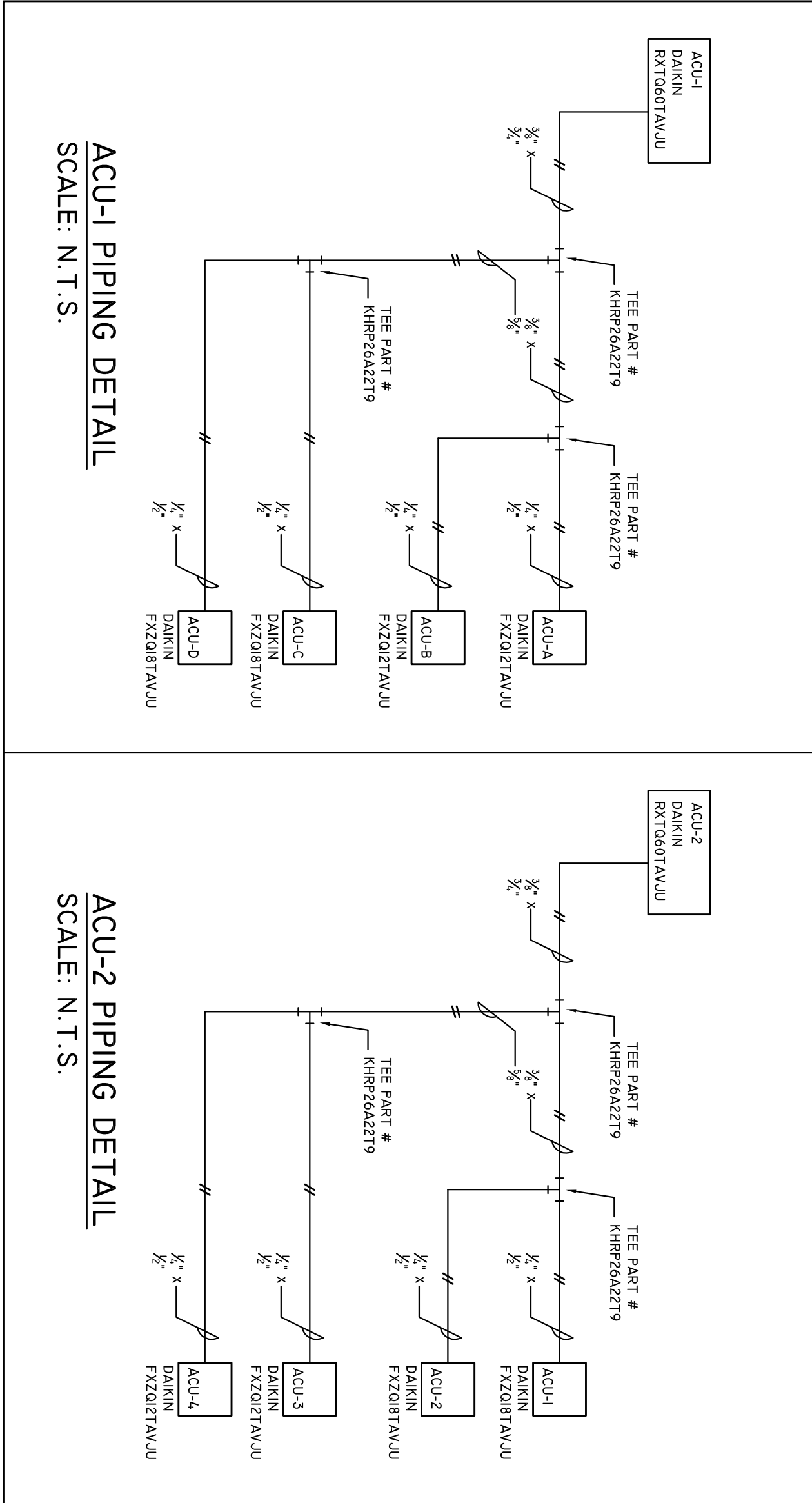
| AIR CONDENSING UNIT SCHEDULE | | | | | | | | | |
|------------------------------|---|-----------------------|----------|--------------|------------------------|------------------------|--------------|---------------|------------------|
| TAG NO. | AREA SERVED | MODEL | CAPACITY | EFFICIENCY | CAPACITY | REFRIGERANT | ELECTRICAL | UNIT WEIGHT | REMARKS |
| ACU-1 | CLASSROOM 1 & 2 | DAIKIN RXTO60TAVJU | 5 TON | IEER 18.0 | COOLING 5751 BTU/HR | HEATING 5288 BTU/HR | FLA 208 | PHASE 1-PH | FLA 224.9 LBS |
| ACU-2 | MEDICAL AS. SKILLS LAB/NURSING SKILLS LAB | RXT060-TAVJU | 5 TON | 18.0 | 5742A BTU/HR | 5749Z BTU/HR | R410A 208 | 29.1 | 224.9 LBS |

| VARIABLE AIR CONDITIONING EVAPORATOR UNIT SCHEDULE | | | | | | | | | | | | | | |
|--|--------------------|----|-----------|------------------------|---------|-----------------------|------|---------|-----|-----|-----|--------------|--------|-------|
| TAG NO | AREA SERVED | OA | TOTAL CFM | INDOOR EVAPORATOR UNIT | | | | | | | | | | NOTES |
| | | | | DAIKIN | | ELEC. CHARACTERISTICS | | | | | | | | |
| | | | | MODEL NO. | COOLING | HEATING | SHBH | POWER | MCA | MFA | FLA | WEIGHT (LBS) | | |
| AC-A | CLASSROOM 1 | 0 | 353 | FZ2012TAVJU | 11,944 | 12,600 | - | 208/1PH | - | - | 0.4 | 36.4 | 12.3.5 | |
| AC-B | CLASSROOM 1 | 0 | 353 | FZ2012TAVJU | 11,944 | 12,600 | - | 208/1PH | - | - | 0.4 | 36.4 | 12.3.5 | |
| AC-C | CLASSROOM 2 | 0 | 511 | FZ2018TAVJU | 18,086 | 18,242 | - | 208/1PH | - | - | 0.6 | 41.9 | 12.3.5 | |
| AC-D | CLASSROOM 2 | 0 | 511 | FZ2018TAVJU | 18,086 | 18,242 | - | 208/1PH | - | - | 0.6 | 41.9 | 12.3.5 | |
| AC-1 | NURSE SKILLS LAB | 0 | 511 | FZ2018TAVJU | 18,086 | 12,600 | - | 208/1PH | - | - | 0.6 | 41.9 | 12.3.5 | |
| AC-2 | NURSE SKILLS LAB | 0 | 511 | FZ2018TAVJU | 18,086 | 12,600 | - | 208/1PH | - | - | 0.6 | 41.9 | 12.3.5 | |
| AC-3 | MED ASSIT. SK. LAB | 0 | 353 | FZ2012TAVJU | 11,944 | 18,242 | - | 208/1PH | - | - | 0.4 | 36.4 | 12.3.5 | |
| AC-4 | MED ASSIT. SK. LAB | 0 | 353 | FZ2012TAVJU | 11,944 | 18,242 | - | 208/1PH | - | - | 0.4 | 36.4 | 12.3.5 | |
| NOTES: 1) REPEVE WALL CONTROLLER 2) BACKNET INTERFACE W/ EXISTING B.M.S. 3) CONDENSATE PUMP, 4) WALL MOUNT BRACKETS, 5) FACTORY START UP EQUIPMENT BASED UPON DAIKIN MANUFACTURE | | | | | | | | | | | | | | |

NOTES: 1) REMOVE WALL CONTROLLER. 2) BACKSET INTERFACE W/ EXISTING B.M.S. 3) CONDENSATE PUMP. 4) WALL MOUNT BRACKET(S). 5) FACTORY START UP

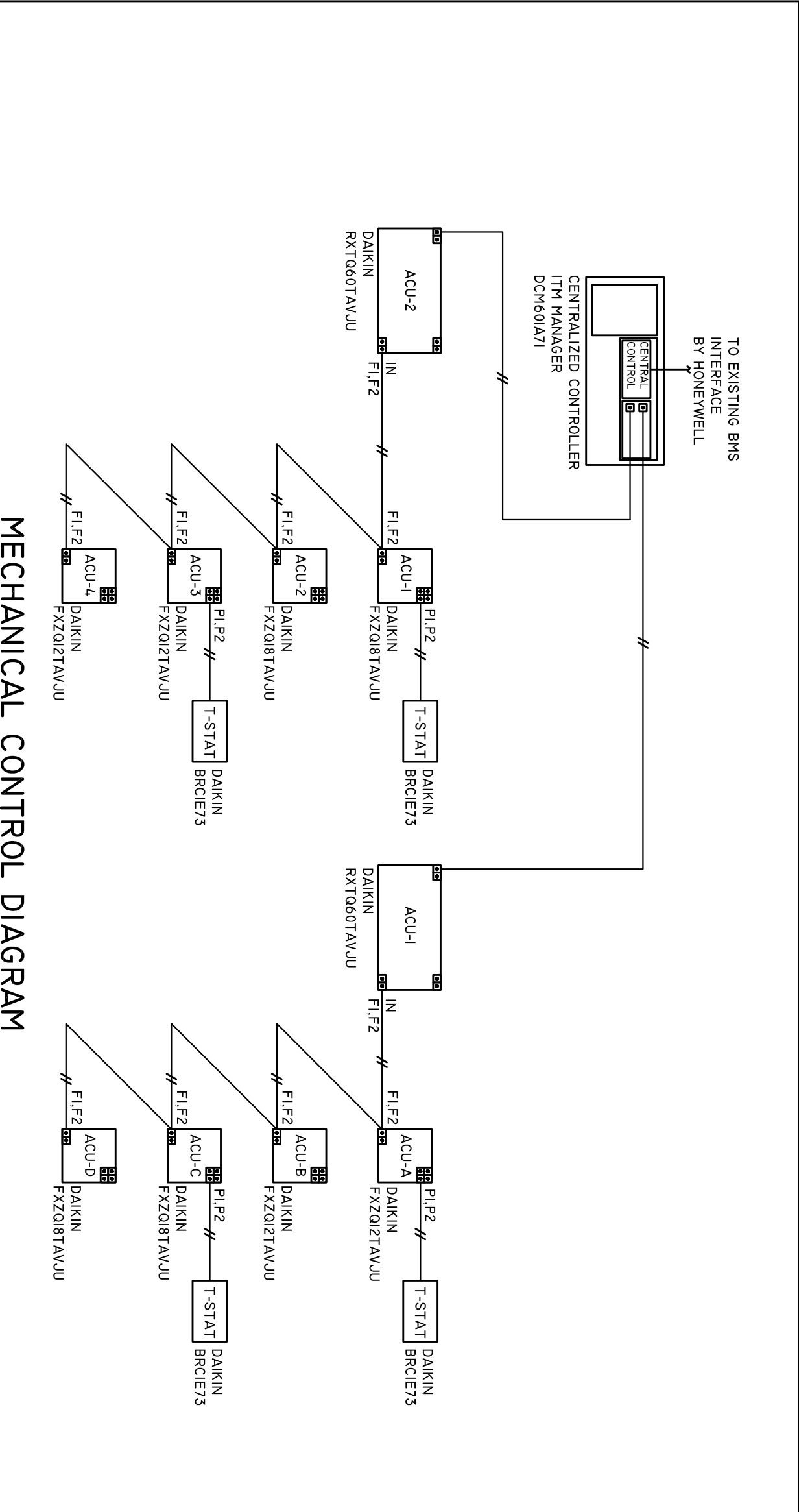
EQUIPMENT BASED UPON DAIKIN MANUFACTURE

DETAILS

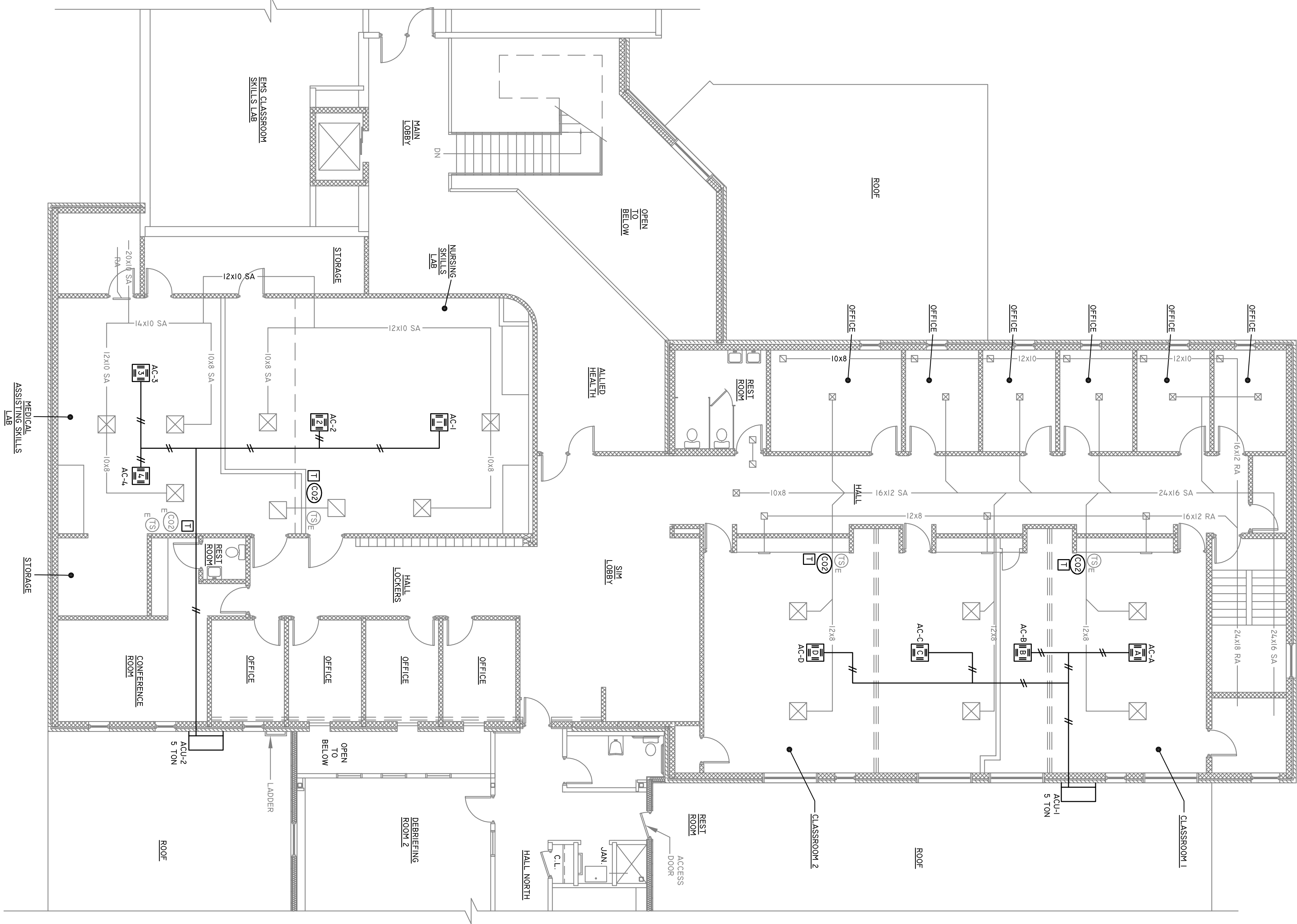


ACU-1 PIPING DETAIL
SCALE: N.T.S.

ACU-2 PIPING DETAIL
SCALE: N.T.S.



MECHANICAL CONTROL DIAGRAM
SCALE: N.T.S.



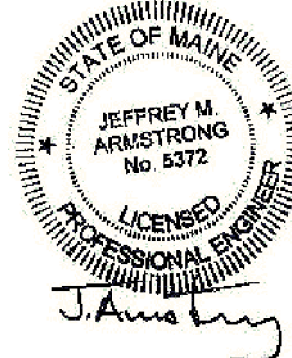
SECOND FLOOR PLAN
SCALE: 1/8"=1'-0"



Armstrong Engineering
Mechanical Electrical Design Consultants
94 Presque Isle Street, Fort Fairfield, Maine 04742
Phone (207) 473-7117 Fax (207) 476-5621

Copyright 2019 by
Armstrong Engineering
All Rights Reserved
Reproduction or use of any part of this document without the written permission of Armstrong Engineering.

- ☐ FOR PRELIMINARY REVIEW
- ☒ FOR PROJECT BIDDING
- ☐ FOR PROJECT CONSTRUCTION
- ☐ RECORD DRAWINGS



NMCC-CHRISTIE BUILDING.
PRESQUE ISLE, MAINE
NURSING / CLASSROOM
AIR CONDITIONING

| REV | DATE | DESCRIPTION |
|-----|------|-------------|
| | | |
| | | |
| | | |

SHEET TITLE:

MECHANICAL
PIPING PLAN

APRIL 02, 2019

SCALE-AS NOTED

M-1

BREM PROJECT#: PT3054
AE PROJECT#: 1902-18